

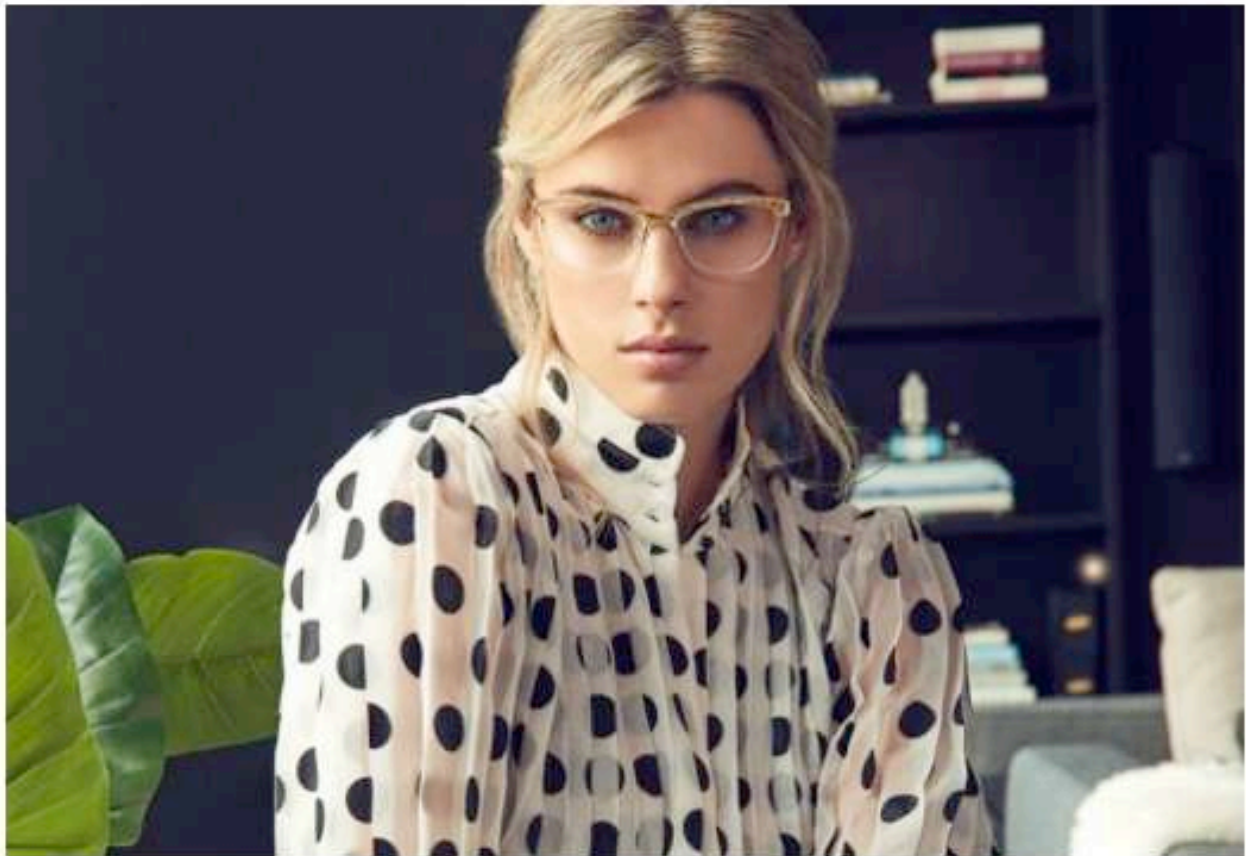


FYSH Fall 2018 Release

By Margaux Feldman - September 3, 2018  26  0



FYSH reveals its new collection for Fall 2018. Combining the latest runway looks with the color trends of the season, the new styles feature a vast array of bold colors and intricate detailing for a unique look. The most current shapes are elevated by gradient, translucent or iridescent tones, amazing patterns and exclusive design elements, creating the perfect accessory for today's strong, ambitious women.



F-3615

The new acetate frames are all about a kaleidoscope of colors and feminine details. Modified cat-eye style **F-3615** features Mazzucchelli animal print acetate with iridescent colors that shifts shades as it moves in the light.



F-3616

Rounded rectangle shape of style **F-3616** is a large fit frame that comes in soft feminine shades in gradient acetate. Beveling along the browline provides dimension to the design.



F-3611

The classic cat eye style **F-3611** showcases a sophisticated color palette achieved by custom lamination that enriches the translucent crystal acetate and accents the browline.



F-3612

A metal frame plays with color blocking and finishes in style **F-3612**. A semi rimless frame with a modified cat eye shape and a mono-block front, its super thin profile is highlighted by two-tone coloring and unique end pieces that feature a jigsaw puzzle design wrapping harmoniously to temples.



F-3613

Style **F-3613** will light up any look with the mix of solid and glitter epoxy that creates a unique color blocked effect on the end pieces and the temples.

For a look at the FYSH Fall collection, [click here](#).